

SUPERPSYCHED SUPPORT is a pediatric clinic based in Merrillville Indiana to support student and family needs. Our services include, but not limited to:

Mental & Spiritual Well-Being

- Individual & Family therapy
- Supporting Social & Emotional Growth
- Learning & understanding Stressors & Triggers
- Increasing Positive Communication Between Peers & Adults



GROUP THERAPY

USING PEER ROLE MODELS TO LEARN NEW AND CHALLENGING SKILLS.

- SOCIAL GROUPS
- FEEDING GROUPS



Physical therapy

Helping children move and interact with their environments smoothly and confidently.

- Walking and Mobility
- Balance, Coordination, Motor Planning
- Strength, Muscle tone and Range of Motion
- Sports Injuries
- Toe Walking
- Postural Control and Positioning

Occupational therapy

Helping children build better self-esteem, confidence, and independence in all the things they do.

- Sensory Processing Disorder
- Balance, Coordination, Strength, and Endurance
- Fine Motor and Handwriting
- Visual Motor Integration
- Play and Social Skills
- Feeding and Oral Motor Skills
- Self-Care
- Academic and Cognitive Skills
- Behavioral Difficulties
- Developmental Delays



JUST FOR PARENTS!

WE ALSO OFFER MONTHLY PARENT WORKSHOPS AND SUPPORT GROUPS!

Speech therapy

Helping children speak, communicate and understand language.

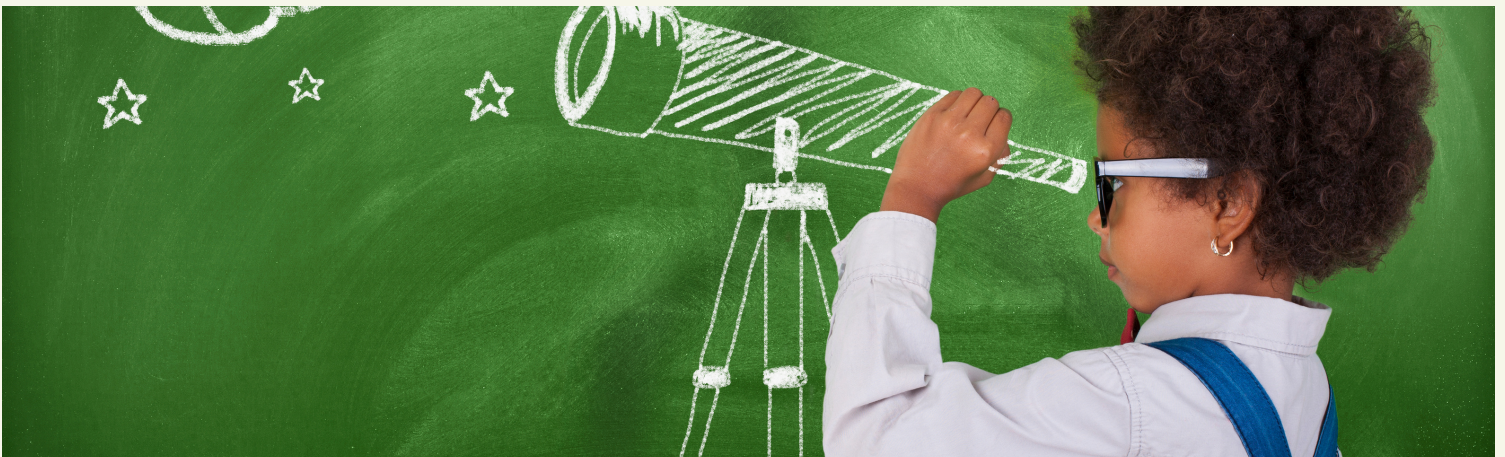
- Expressive and Receptive Language
- Articulation/Intelligibility
- Pragmatics and Social Skills
- Literacy and Vocabulary



Sensory Integration

Gradually increasing play-based activities to integrate a child's nervous system. Helping children learn to self-regulate their emotions and behavior.

- Autism and ADHD
 - Sensory Processing Disorder
 - Poor Tolerance of Sensory Stimuli from the Environment
 - Meltdowns and tantrums
 - Poor Attention and Concentration
 - Poor Self-Regulation
 - Behavior and Social Difficulties
- Aggression, Frustration or Avoidance Behaviors



About Us

Charm K. Mosley is a School Psychologist and previous Director of Special Education with years of experience supporting students, parents, and teachers throughout Northwest Indiana and Chicago. She opened SUPERPSYCHED SUPPORT, a clinic located in Merrillville offering Speech, Physical, and Occupational therapy along with individual therapy to support emotional and behavioral needs of children. She also believes that family support is vital to a students' overall growth and development.



CONTACT US TODAY

PHONE: 219-750-9600

FAX: 219-370-0096

8690 BROADWAY SUITE A
MERRILLVILLE, IN 46410
WWW.SUPERPSYCHEDSUPPORT.COM

  @SUPERPSYCHEDSUPPORT

